

Riz Chahartaee

Composer: Behzad Dashti

Tempo: 60

Measures 4 and 5 of the piece. Measure 4 contains a continuous eighth-note pattern. Measure 5 features a melodic line with four eighth notes, each marked with a 'T' above it, and a '1' below the first two. The staff concludes with a repeat sign and a fermata.

Riz Hastae

Measures 7 and 10 of the piece. Measure 7 contains a continuous eighth-note pattern. Measure 10 features a melodic line with four eighth notes, each marked with a 'T' above it, and a '1' below the first two. The staff concludes with a repeat sign and a fermata.

Riz Tarkibi

Measures 6 and 7 of the piece. Measure 6 contains a continuous eighth-note pattern. Measure 7 features a melodic line with two eighth notes, each marked with a 'T' above it, and a '1' below the first. The staff concludes with a repeat sign and a fermata.

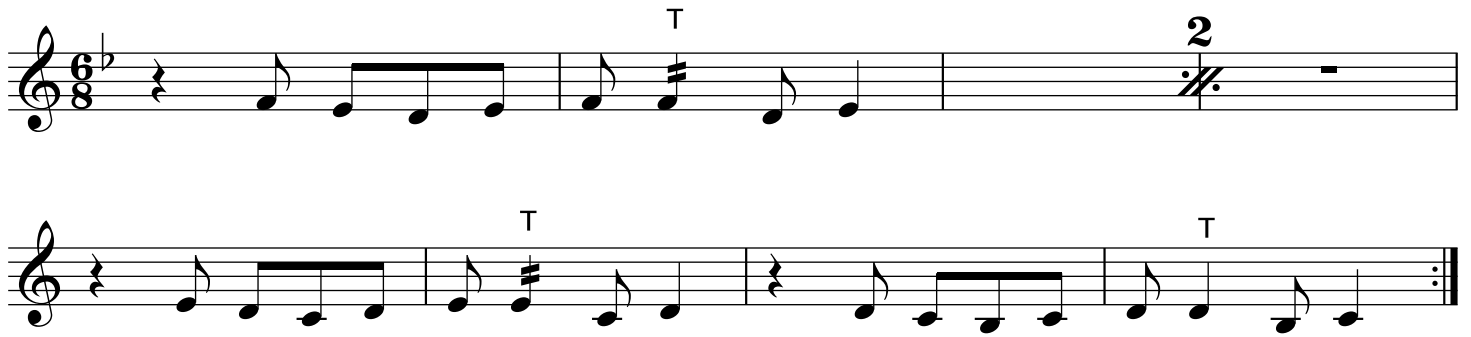
Musical notation for Tarkibi Hashtae, measures 1-4. The first staff is in 6/8 time, featuring a continuous eighth-note melody. The second staff shows the first four measures of a new line, with the first four measures marked with a 'T' (Tahreef) above the notes. The remaining measures are marked with 'simile.' below the staff.

Navae Riz

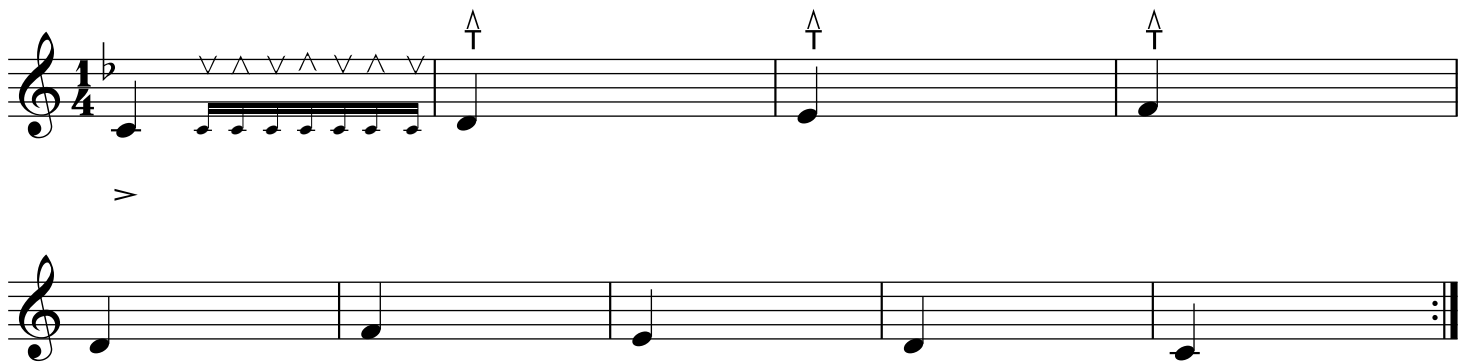
Musical notation for Navae Riz, measures 1-12. The piece is in 2/4 time. The notation consists of six staves. The first staff has measures 1-4, with 'T' (Tahreef) above measures 2 and 4. The second staff has measures 5-8, with 'V' (Vah) above measure 5 and 'T' above measures 6, 8, and 10. The third staff has measures 9-12, with 'V' above measure 9 and 'T' above measures 10, 12, and 14. The fourth staff has measures 13-16, with 'V' above measure 13 and 'T' above measures 14, 16, and 18. The fifth staff has measures 17-20, with 'T' above measures 18, 20, and 22. The sixth staff has measures 21-24, with 'V' above measure 21 and 'T' above measures 22, 24, and 26. The piece concludes with a double bar line.

Kuche Lar Riz Tarkibi

3



Rast Riz



simile.

Rast riz (Nghme)

The musical score for "Rast riz (Nghme)" is written in 3/4 time and consists of five staves. The key signature has two flats (B-flat and E-flat). The notation includes various rhythmic values such as eighth, quarter, and half notes, as well as rests. Up-bow or breath marks (indicated by upward-pointing arrows) are placed above specific notes on the first four staves. The fifth staff concludes with a double bar line and repeat dots. Fingering numbers 2 and 3 are present below certain notes in the fourth and fifth staves.

Chap Riz

5

A musical score for a piece titled "Chap Riz". The score is written on a single staff in 4/4 time, with a key signature of one flat (B-flat). The melody begins with a quarter note on G4, followed by a series of eighth notes: A4, Bb4, A4, G4, F4, E4, D4, C4. Above the first eighth note (A4) is a "v" mark, and above the following eighth notes (Bb4, A4, G4, F4, E4, D4, C4) are "v ^ v ^ v ^ v ^" marks. The melody continues with a quarter note on C4, followed by a quarter note on D4, a quarter note on E4, a quarter note on F4, a quarter note on G4, a quarter note on A4, a quarter note on Bb4, a quarter note on A4, a quarter note on G4, a quarter note on F4, a quarter note on E4, a quarter note on D4, a quarter note on C4, and finally a quarter rest. Above the first three quarter notes (C4, D4, E4) are "v" marks with a vertical line through them. Below the first quarter note (G4) is an accent mark (>). The piece concludes with a double bar line and repeat dots. The word "simile." is written below the staff.

>

simile.